
G-MAX

THE **NEW** NAME IN FORAGE WAGONS

Giltrap Forage Wagons are a trusted brand on farms, and for good reason. For over 50 years, farmers have shared their aspirations for the perfect forage wagon and our new G-MAX Forage Wagons are the result.

Giltrap has always been a pioneer at introducing industry-leading technology to farmers.

The new G-MAX forage wagon builds on our decades of experience to bring you an industry leading wagon for the modern age.

Our fresh contemporary design is packed with exciting new features and upgraded technology from the best in the business so that you can feed out precisely, and reliably, whenever you need to.

Simple to use and easy to maintain while delivering exceptional performance, the G-MAX wagon will take your feeding programme to the next level.

Our comprehensive range is designed to handle all feed types, including grass, maize, whole-crop cereals, silage, and both long and precision-cut round or square bales, catering to farms of all sizes.

Choose from a broad range of options and accessories like wireless weighing and feed rate automation for precision feeding.



KEY FEATURES	BENEFITS
All wagons are 'scale-ready' with a double chassis and load cell mounting points	Flexibility to upgrade to wireless weighing for precise feed management
Strong rugged design and construction	Will provide years of reliable service in tough conditions
Super heavy duty bin supports and stainless steel bin panels	Stainless steel is proven as the best material for corrosion and wear resistance in silage, combined with rugged uprights and a high tensile stainless fastening system for heavy loads
Recycled UHMWPE plastic floor	Eco-friendly, superb abrasion resistance and sliding properties. UV resistant
Powerful gearbox transmissions on the floor and elevator shafts	Geared for heavy loads with smooth torque application. Easily serviced with incorporated shaft couplings
Cast iron bushes on high load shafts and stainless steel chain tensioners	Hard wearing and long lasting - perfect in silage, grit and moisture. Stainless tensioners won't rust and are located directly behind the sprockets for easy access
13mm high tensile calibrated link chains on the floor and elevator	Unbeatable strength with a tested breaking load of 22 tonnes per chain. Link chains are proven to outperform roller chains in acidic silage conditions, and there's no maintenance except for occasional tensioning
Large diameter high tensile chain sprockets designed for high torque, maximum chain engagement and low wear	Positive drive and long service life for the floor and elevator drag chains
Extra heavy duty galvanised floor bars and elevator bars with secure high tensile chain attachments	Built for heavy, tough loads. Easy to service or replace
Mesh front screen and mesh rear back gate	Improves the operator's visibility for improved load monitoring
1200mm wide cross conveyor belt or chain and slat discharge	Wide for high feed rates and feeding bales. Easy to convert from belt to chain and slat
Load sensing hydraulics ensure an even feed flow is maintained.	Precise feed management
Ladder	Access to the top of the feed bin. Can be fitted to either side. Ability to choose the location that suits you
Centralised remote greasing banks	Ease of greasing which now includes the top elevator bearings
Heavy duty rear tailgate	Includes high mount tail lights, auto release for load reversing, and a safety cover
Heavy duty walking beam axles with replaceable Vesconite™ pivot bushes	Vesconite™ has built-in lubricants for long life with low maintenance, even with limited lubrication
Flange bolted swivel tow coupling	Easily replaced or swapped for a K80 hitch
Sleek narrow drawbar for great manouvability	The slimline design allows a tight turning circle, and includes attachment points for the optional hydraulic jack or quick hitch stand
UHMWPE plastic slides for the elevator bars	Quiet and smooth running. Low wear
Extended maize plates at the base of the elevator frame	Reduces spillage of fine chop feeds
Sturdy angled steel mudguards	Helps keep wagon clean, and spilled feed slides off easily
External conveyor belt tensioners	Easy access for belt tracking adjustment
Folding extension conveyor mounts	Easily upgrade with a folding extension conveyor for extra reach into bins or troughs



Strong uprights and corrosion proof stainless panels are proven as the best construction system for acidic and abrasive silage



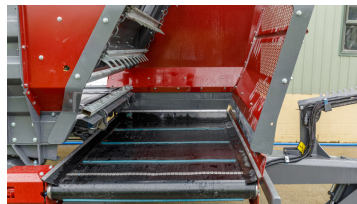
22 tonne breaking strength 13mm link calibrated chains will not seize and they provide unbeatable performance with harsh silage



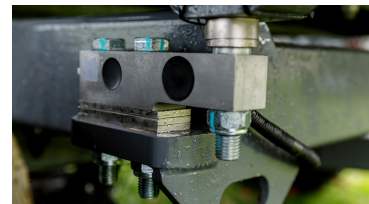
Stainless steel chain tensioners that won't rust and are easy to reach



High quality gearboxes provide plenty of torque for the floor and elevator power transmissions



The cross conveyor belt or slat-chain conveyor is 1200mm wide to handle all feed types without blocking



All wagons are 'scale-ready' and can have electronic load cells fitted for mobile weighing



Heavy duty galvanised elevator bars have an aggressive tearing action to feed out the toughest silage



The back gate includes a safety cover for the floor chains, and it can be held open with a stay for maintenance access



The drawbar is narrow for tight turning and the swivel hitch is bolted on for easy replacement. Easily add a hydraulic jack or quick hitch stand



The mesh front screen gives the operator great visibility into the wagon and for reversing when empty



Over-sized hubs and stubs have sealed bearings. Brakes can be retrofitted as an option



Angled mudguards keep dirt and mud spray to a minimum

WIRELESS TECHNOLOGY (OPTIONAL)

G-MAX WIRELESS SCALES AND FEED RATE AUTOMATION

Our wireless weighing and feed rate control technology was the first of its kind on forage wagons and is used to relay wagon data to the display mounted in the tractor. Designed and manufactured specifically for Giltrap forage wagons, the latest G-MAX system builds on years of experience and proven in-field reliability, using the latest technology.

The 7-inch touch screen controller has an intuitive layout and responsive touch controls, letting you monitor weight changes and make informed decisions from inside the tractor. The wireless connection has a huge operating range of up to 100m, or line of sight.

The touch screen mounts inside the cab and ensures accurate loading and feed management, no matter what the weather conditions are. On-board weighing systems eliminate guesswork, with the scales and rate controls at your fingertips while you're loading and operating the wagon.

You will improve your feed utilisation and have confidence that the correct ration portions are fed out.

The robust scale design is configured with either 4 or 6 industrial shear beam load cells and heavy-duty mounts for durability and long life. Bespoke stainless steel convex/concave pivot washers ensure accurate scale readings on the move.

GREAT TECHNICAL FEATURES INCLUDE:

- Programmable automatic shutdown function to conserve the battery life
- Automatic fast charging of the on-board 12-volt battery
- Compact RAM mount for the controller in the tractor cab
- Easily accessible electronics junction box for servicing and upgrades
- Control and weighing modules can be fitted aftermarket as an upgrade
- The controller module has LEDs for simple user information and diagnostics
- The touch screen controller can easily be shifted between tractors with the addition of a second RAM bracket and power loom
- Remote technical support by Giltrap on your controller in the field. Our technical support team can access your control system with your permission, to troubleshoot and install upgrades

CHOOSE AN OPERATION MODE TO SUIT YOUR FARM

Wireless Scales With Manual Feed Rate Control

- The load in the wagon is displayed in kg with tare and gross scale functions at your fingertips, and the feed rate is controlled manually on the hydraulics. Requires load cells.

Wireless Electronic Rate Control Without Scales

- Upgrade from manual control so that the feed rate can be adjusted with the controller from the tractor seat on the move - particularly useful for feeding out large bales, where the rate needs to be changed often. Requires a solenoid valve. Load cells optional.

Wireless Scales And Fully Automatic Feed

Rate Control - Upgrade to wireless scales with fully automatic control. The load in the wagon is displayed in kg with tare and gross scale functions at your fingertips. To feed out simply enter your total feed run length and how much you want to feed out. The wagon does the rate control calculation and evenly discharges the load across your desired distance, shutting off at the end of the run to eliminate over-feeding.



G-MAX FORAGE WAGONS CONT.

OPTIONAL EXTRAS

- Wireless weighing - Remote weighing with a large colour touch screen
- Auto rate control - Automatic load dispensing for feed pads, automatically feeds out a certain weight over a set distance
- Hydraulic drawbar jack - Upgrade from a manual winding jack for ease of use
- Chain and slat conveyor - The belt conveyor is easily converted to a slat and chain conveyor. Ideal for use with large square bales or beet. Excellent tracking and low maintenance
- Conveyor side shift ram with 200mm of travel - Extends the conveyor outwards to feed into troughs
- Extension cross conveyor with adjustable discharge height - 900mm or 2100mm lengths for precise product delivery into feed bunkers, troughs or rings
- Quick hitch stand - Used with a Giltrap Quick Hitch for fast hitching. The large foot reduces the chance of sinking in soft ground
- K80 ball hitch - Spoon attachment instead of a swivel towing eye. Safe and secure with reduced wear
- Overwidth panels on the rear gate - Improved safety with better visibility on the road
- Rear strobe light - Improved visibility
- Different tyres - Various tread patterns and sizes to suit your farm
- Hydraulic brakes - Available for the front and rear axles. Can be operated from the tractor brake circuit or a hydraulic remote valve
- Sprung and steering axles - Fully braked with improved suspension and manoeuvrability. Ideal for longer travel distances at speed. Reduces chassis fatigue and rear tyre scuffing (with rear steering)



Hydraulic jack



Chain & slat conveyor



Hydraulic brakes



DIMENSIONS AND CAPACITIES

MODEL	G-MAX9	G-MAX11	G-MAX13	G-MAX16	G-MAX21	G-MAX25
Overall length (m)	6.10	6.10	7.39	8.36	9.33	9.33
Overall width (m)	2.69	2.69	2.79	2.79	2.98	2.98
Overall height (m)	2.76	2.94	2.93	3.00	3.23	3.52
Loading height (m)	2.47	2.65	2.64	2.72	2.94	3.25
Tare weight (kg)	3300	3430	4050	4630	TBC	TBC
Cubic capacity (m3)	9	11	13	16	21	25
Conveyor belt width (mm)	1200	1200	1200	1200	1200	1200
No. of floor chains	2	2	2	2	2	2
Chain size - floor and elevator (mm)	10	10	13	13	13	13
Load cells (kg)	4 x 5000	4 x 5000	6 x 5000	6 x 5000	6 x 5000	6 x 5000
Axle size (mm)	60 (6 stud)	70 (6 stud)	70 (6 stud)	80 (8 stud)	90 (8 stud)	130 (sprung)
Wheels	11.5/80 x 15.3	400/60-15.5	400/60-15.5	400/55-22.5	500/60-22.5	500/60-22.5